

FIRE PROTECTION COATING

simple and efficient

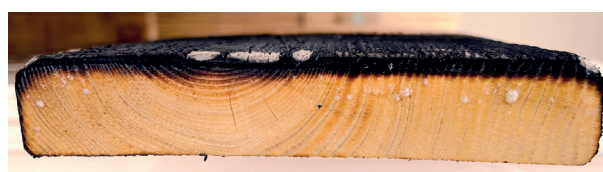
– FOR INDOOR AND OUTDOOR AREAS –

This coating can save your life.

Wood is a popular building material, but safety is an important concern. Architects and builders need to think carefully about the materials they use. Fire safety is particularly important and special coatings help to minimise the risks. These coatings are designed to **extend the time by 8-10 minutes** before the fire spreads. There is no additional smoke and no dripping of the coating. This gives people more time to leave the building in the event of an evacuation.



Substrate/Wood



Unprotected wood and solid wood with a standard B1 (DIN 4102) coating quickly catches fire, allowing it to spread.

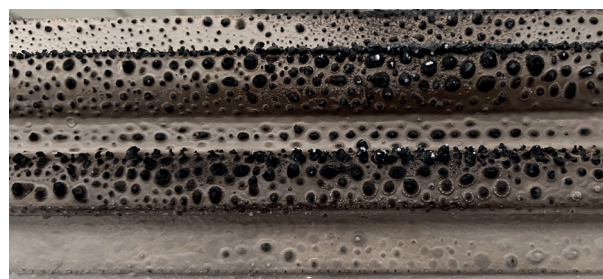


Substrate/Wood

Flame Guard



The fire-retardant coating (DIN EN 13501-1) foams up and forms a temporary barrier to the flames.



Coating after approx. 5 min. of fire load.

Benefits at a glance

- The fire protection coating achieves the highest resistance class that can be achieved with organic materials.
- The fire protection coating extends the time until a fire spreads by 8-10 minutes.
- The fire protection coating fulfils DIN EN 13501-1.
- Indoor, any wood substrate with a minimum thickness of 8 mm can achieve class B-s1,d0 with the coating.
- For interior use: available in clear, opaque or transparent colours.
- For exterior use: available in coating colours (RAL/NCS).
- This coating is approved for exterior use on spruce/pine profiled boards.



Jürgen Schröder
GmbH

Jobcoater for wood

Bahnhofstraße 4a • 27386 Brockel
Tel. (+49(0)4266) 1030 • Fax (+49(0)4266) 8607

www.lackiertechnik-schroeder.de